



## TIDINGS in this issue

Tidings Tips: Time To Tune Up  
Your HVAC

Residential Energy Audits Make  
Sense!

Special Needs Notification  
Information

Photo is from the State Archives of Florida, Florida Memory Project, taken by Robert E. Fisher, August 24, 1948.



BEACHES | ENERGY  
SERVICES

*Ride the Green Wave*

### Beaches Energy Helps Your Household Reel In Energy Savings.

In our waterways and at the beach, fishing is one of our community's favorite pastimes. Beaches Energy provides many ways to save on your utility bill by using less electricity in your homes and businesses. Scheduling a residential energy audit and taking advantage of energy-saving rebates is a great way to start planning. Contact Beaches Energy Services today and begin reeling in your savings!



## Tidings Tips: Condition Your Air Conditioning System

Now is a good time to have your HVAC service professional do a spring check-up. In typical Florida homes, about 20 percent of the air that moves through the duct system is lost due to leaks, holes and poorly sealed ducts. There are several things you can do to improve duct performance in your home. First, start by sealing leaks using foil tape (UL181) and mastic sealant. In addition, make sure that the connections at vents and registers are well sealed where they meet the floors, walls and ceiling.



The rising temperatures and humidity make this a great time to review your HVAC maintenance checklist:

- Replace your air conditioner filter.
- Rinse the coils on your outside unit.
- Remove leaves and debris from inside the top grille of the outside unit.
- Trim bushes and shrubs around your

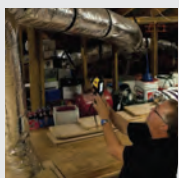
outdoor units to allow at least two feet of clearance.

## FREE Residential Energy Audit Can Reveal Household Leaks

During mild spring weather, opening windows is a cost free way to stay comfortable, but if windows and doors don't close snugly, heated or cooled air escapes, costing you money. Beaches Energy



Services offers **free in-home audits to residential customers** that can help identify leaks so the situation can be fixed. Caulking, weather-stripping and duct sealing are solutions that usually pay for themselves in one year. Insulation provides resistance to heat flow, measured as an "R-value." Most older homes benefit from added insulation or R-value upgrade. Insulating and home sealing are great values, and you can find out what you need during your in-home energy audit. Visit [www.beachesenergy.com](http://www.beachesenergy.com) for rebate information on insulation upgrades that meet certain specifications.



### Electric price for 1,000 kilowatt-hours

	February	March
Base charge, residential	\$4.50	\$4.50
KWH base charge	\$76.57	\$76.57
Power cost adjustment	\$42.84	\$42.84
Total	\$123.91	\$123.91

## For Our Customers With Special Needs



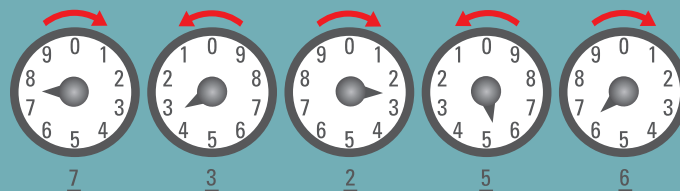
Beaches Energy Services' customers with serious health problems requiring the use of specialized electric equipment should know about the **Medical Support Notification Program**. For customers that provide a doctor's verification of an electric

necessity for medical purposes, we will place your name and address on our **Medical Support List**. Every customer identified in this program will receive assurance that everything possible is done to restore electric service quickly. For more information, call **(904) 247-6241**.

## Reading Your Electric Meter

Beaches Energy Services uses two types of meters to measure energy use in kilowatt-hours, and both are easy to read. A cyclometer simply shows the five-digit reading like a car's odometer. A dial meter has five dials, each yielding one digit. As shown in the diagram, the reading is 73256. Note that the dials rotate in different directions, shown by the red arrows and the number sequence. When the pointer is between digits, write down the lower number. When the pointer is moving from 9 to 0, the 0 represents 10. To calculate your kilowatt-hour consumption for a certain period (a weekend, a month, etc.):

- 1) take a reading
- 2) take a second reading at the end of the period
- 3) deduct the first from the second.



## Preventing Outages and Interruptions

Our commitment to deliver electricity without interruption is constantly challenged by lightning, wind, and heavy rain. Beaches Energy's strategically located underground power lines and the storm-hardening program helps us overcome these challenges. Our employees are dedicated to maintaining constant electric service you can rely on. Should you ever need to report an outage or trouble with your utility service, Beaches Energy Services provides a **24-hour emergency line** at **(904) 247-6171**.

