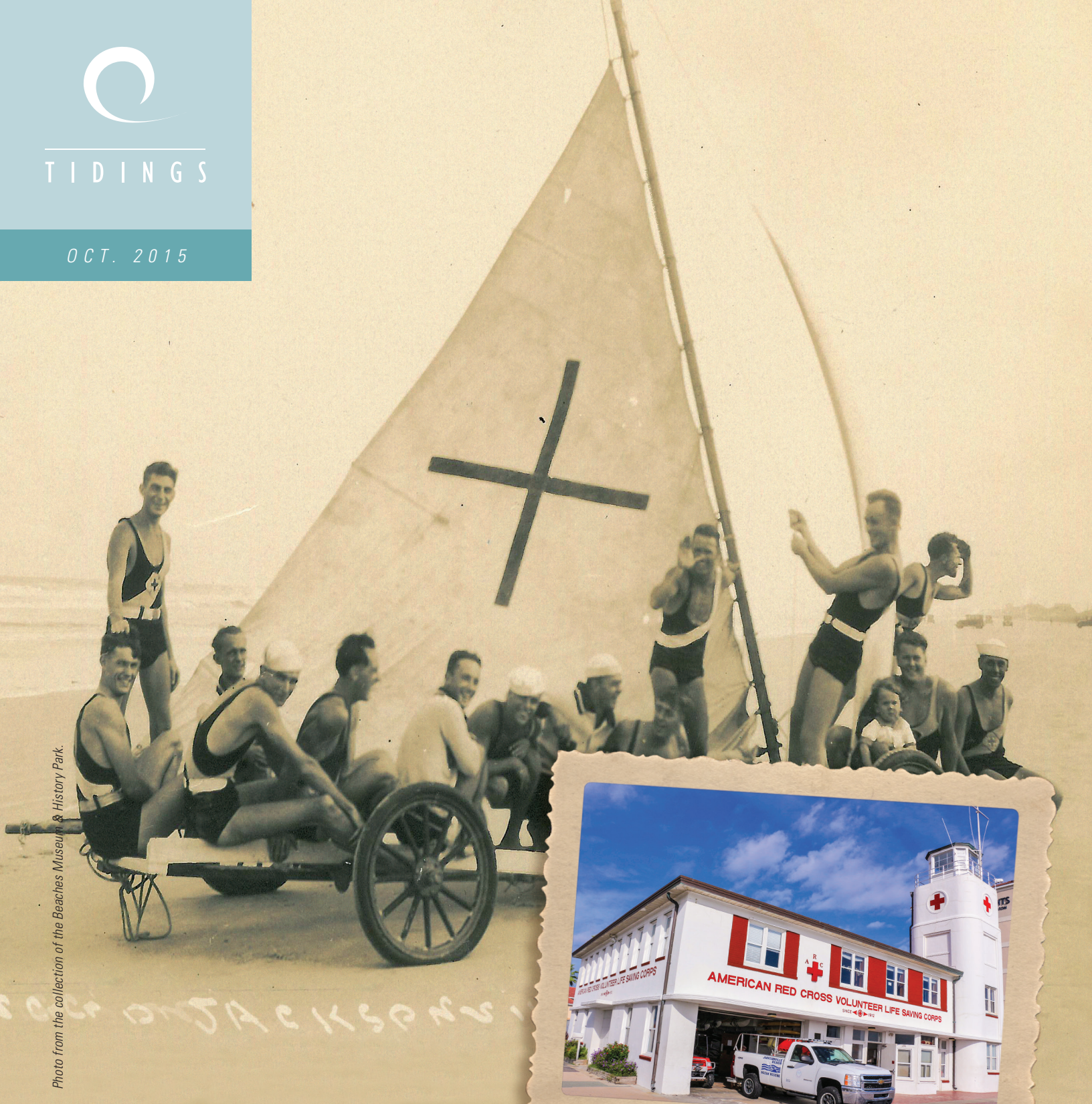




TIDINGS

OCT. 2015

Photo from the collection of the Beaches Museum & History Park.



BEACHES | ENERGY
SERVICES

IN THIS ISSUE:

Tidings Tips: Save Energy with Smart Gadgets

Fall is the Perfect Time to Seal Your Home

Stay Safe this Halloween



TIDINGS TIPS: ENERGY SAVING GADGETS TO CONSIDER

October is National Energy Awareness Month and a great time to discover ways to better manage your home energy use and start saving money. Here are a few worthwhile investments that offer truly smart savings:

- **Smart Thermostat** – Your HVAC makes up 50% of your home's total energy consumption. A high-tech device such as a smart or programmable thermostat automatically adjusts to the proper setting, offering you huge savings in energy and money.
- **Smart Power Strips and Sockets** – These devices automatically cut phantom power from anything plugged into them. Power strips are ideal for outlets that are hard to reach. Smart sockets plug into standard outlets and cut power to devices that are in standby mode. Most of these devices are well worth the investment, recovering the initial cost by saving energy in a short time.
- **Household Energy Management Systems** – These devices allow homeowners to control the entire home via remote control. Lighting, heating and air, appliances, stereo, and security systems can all be controlled from your dedicated remote or smart phone. These phone systems are designed for a variety of household budgets. If an entire home system isn't feasible, there are also single lamps, switches and devices that can be controlled remotely or by phone.



HAVE A SAFE AND HAPPY HALLOWEEN

Before you head out trick-or-treating or to holiday parties, review these safety guidelines to keep your holiday full of fun.

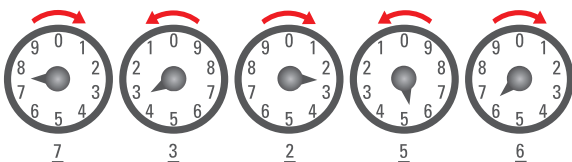
- **Safety in numbers** – Trick-or-treaters should walk in groups with a trusted adult. Make sure children know your home and cell phone numbers and consider giving them a cell phone so they can reach you easily.
- **Stay in the light** – Homes will leave porch lights on to welcome trick-or-treaters, so avoid darkened houses or hallways. Let your children know to NEVER enter a home or car unless you are with them. Use a flashlight to see and let others see you.
- **Fit the costume right** – Make sure that masks fit correctly and kids can see through them, and that costumes fit well so they don't trip anyone up. Try adding reflective tape to costumes and candy bags.
- **Say NO to candles** – Use battery-operated candles or a glow stick for your jack-o'-lantern.
- **Check your treats** – Before eating, examine all treats collected for choking hazards and tampering.



READING YOUR ELECTRIC METER

Beaches Energy Services uses two types of meters to measure energy use in kilowatt-hours, and both are easy to read. A cyclometer shows the five-digit reading like a car's odometer—very simply. A dial meter has five dials, each yielding one digit. As shown in the diagram, the reading is **73256**. Note that the dials rotate in different directions, shown by the red arrows and the number sequence. When the pointer is between digits, write down the lower number. When the pointer is moving from 9 to 0, the 0 represents 10. To calculate your kilowatt-hour consumption for a certain period (a weekend, a month, etc.):

- 1) Take a reading at the beginning of the period
- 2) Take a second reading at the end of the period
- 3) Deduct the first reading from the second reading



PREPARE FOR SEASONAL CHANGES

During mild fall weather, opening windows is a cost-free way to stay comfortable, but if windows and doors don't close snugly, heated or cooled air escapes, costing you money. Caulking, weather-stripping, and duct sealing are simple solutions that usually pay for themselves within one year. Added insulation provides greater resistance to heat flow, which benefits most older homes. Insulating and home sealing are great values, and Beaches Energy Services offers free in-home audits to residential customers that can help identify leaks so the situation can be fixed. Visit www.beachesenergy.com for rebate information on insulation upgrades that meet certain specifications.

ELECTRIC PRICE FOR 1,000 KILOWATT-HOURS

	September	October
Base charge, residential	\$4.50	\$4.50
KWH base charge	\$76.57	\$76.57
Power cost adjustment	\$42.84	\$41.84
Total	\$123.91	\$122.91