



TIDINGS

SEPTEMBER 2018

IN THIS ISSUE:

*How to Read Your
Electric Meter*

*Ways to Conserve
Water At Home*

Avoid Utility Scams

*Beaches Energy
On Social Media*



BEACHES | ENERGY
S E R V I C E S

www.beachesenergy.com

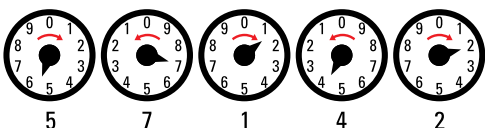
HOW TO READ YOUR ELECTRIC METER

You may want to monitor your energy usage by checking the kilowatt-hours at the meter. Beaches Energy Services uses two types of meters to measure energy use in kilowatt-hours, and both are easy to read.

- A **cyclometer** shows the five-digit reading similar to a car's odometer.
- A **dial meter** has five dials, each yielding one digit.

READING A DIAL METER

As shown in the diagram, the reading is 57142. Note that the dials rotate in different directions, shown by the red arrows and the number sequence. When the pointer is between digits, write down the lower number.



To calculate your kilowatt-hour consumption for a certain period (a weekend, a month, etc.):

- 1) Take a reading
- 2) Take a second reading at the end of the period
- 3) Deduct the first reading from the second



FOLLOW BEACHES ENERGY ON SOCIAL MEDIA!

Stay informed with outage and hurricane information, energy-saving tips and more.

HOW CAN I CONSERVE WATER AT HOME?

When the season continues to bring hot temperatures, cold water tends to be our favorite way to cool off. Taking longer showers or running through sprinklers after a long day in the sun will increase your water usage. Here are a few tips for helping your water conservation efforts:

- **Water your yard in the morning**, rather than in the afternoon. Water evaporates quickly, especially in direct sunlight. Setting your sprinklers to go off before sunrise (or after sunset) allows the water to seep into the soil before it has the chance to evaporate, which will save you from having to re-water.
- **Use the dishwasher.** An ENERGY STAR certified dishwasher uses less than half as much energy as washing dishes by hand and saves nearly 5,000 gallons of water a year.
- **Visit the car wash.** Washing your car at home can cost you around 150 gallons of water! Automatic car washes use only 40 gallons or less.
- **Upgrade your bathroom.** Bathrooms use more water than any other room in the house. Older toilets use up to 6 gallons of water per flush, while most showers use over 2 ½ gallons per minute. WaterSense-certified toilets use just 1.28 gallons per flush while WaterSense-certified showerheads use 2 gallons per minute.



AVOID UTILITY SCAMS

Beaches Energy will never call and threaten to shut off your power immediately or demand personal information over the phone. If you receive a call about your power bill or an unsolicited energy audit call, let us know at 904-247-6241.

Being well-informed can help you avoid utility scams. Learn how to protect yourself at www.beachesenergy.com/scam-alerts.

ELECTRIC PRICE FOR 1,000 KILOWATT-HOURS

	AUGUST	SEPTEMBER
Base charge, residential	\$4.50	\$4.50
KWH base charge	\$79.57	\$79.57
Power Cost Adjustment	\$29.84	\$29.84
Total	\$113.91	\$113.91