



TIDINGS

FEBRUARY 2019

*Beaches
Energy Cares*



BEACHES | ENERGY
S E R V I C E S

www.beachesenergy.com

BEACHES ENERGY CARES

Beaches Energy Services recognizes that our customers have many different needs. We offer a wide variety of services to help you and your loved ones including:

- **Medical Support Notification**

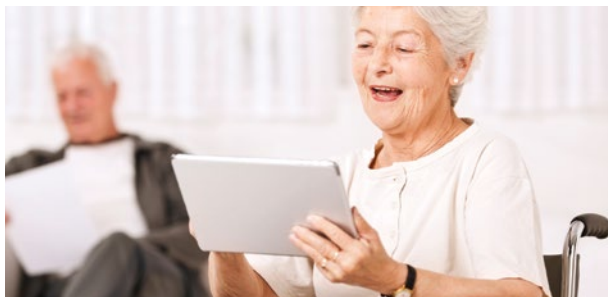
Customers who require specialized electric medical equipment may register to be notified if a scheduled service outage is expected to last an extended period of time. Register by emailing customerservice@beachesenergy.com or calling 904-247-6241.

- **Medical Resources during Emergency Situations**

If you are disabled or need evacuation assistance, register with Duval County Emergency Preparedness to ensure you stay safe and sheltered by calling 904-630-2472 and in St. Johns County call 904-824-5550.

- **Florida Relay Communications**

Assistance for hearing and speech-impaired customers. The voice line is 800-955-8770; the TTY (text telephone) is 800-955-8771.



For more information visit:
Beachesenergy.com/special-needs

TIDINGS TIP FOR AN ENERGY-EFFICIENT VALENTINE'S DAY

Turn down the thermostat and stay warm by cuddling under a comfy blanket to help lower your February electric bill!

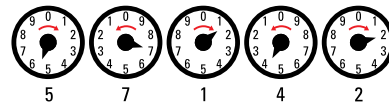
HOW TO READ YOUR ELECTRIC METER

You may want to monitor your energy usage by checking the kilowatt-hours at the meter. Beaches Energy Services uses two types of meters to measure energy use in kilowatt-hours, and both are easy to read.

- A **cyclometer** shows the five-digit reading similar to a car's odometer.
- A **dial meter** has five dials, each yielding one digit.

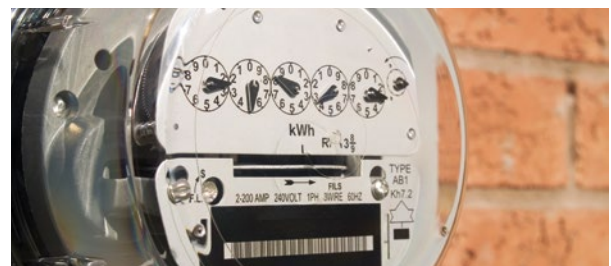
Reading a Dial Meter

As shown in the diagram, the reading is 57142. Note that the dials rotate in different directions, shown by the red arrows and the number sequence. When the pointer is between digits, write down the lower number. When the pointer is moving from 9 to 0, the 0 represents 10.



To calculate your kilowatt-hour consumption for a certain period (a weekend, a month, etc.):

- 1) Take a reading
- 2) Take a second reading at the end of the period
- 3) Deduct the first reading from the second



ELECTRIC PRICE FOR 1,000 KILOWATT-HOURS

	JANUARY	FEBRUARY
Base charge, residential	\$4.50	\$4.50
KWH base charge	\$79.57	\$79.57
Power Cost Adjustment	\$29.84	\$29.84
Total	\$113.91	\$113.91



904-247-6241 (M-F 8am-5pm) | 904-247-6171 (after hours/emergency)

TIDINGS
FEBRUARY 2019