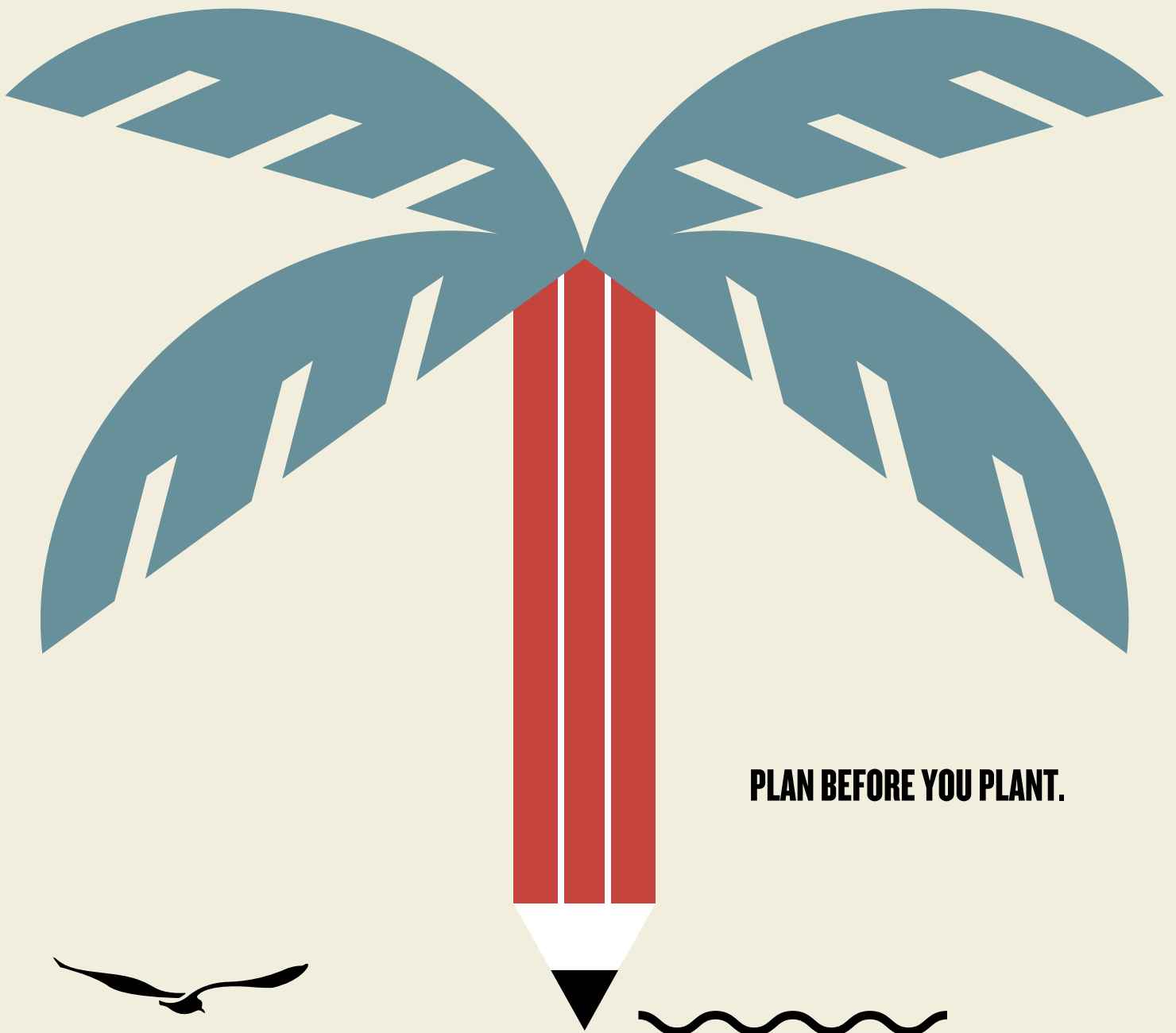


THE TIDINGS

MARCH 2022



PLAN BEFORE YOU PLANT.



BEACHES | ENERGY
S E R V I C E S

CALL BEFORE YOU DIG



Safe digging is everyone's responsibility. However, when someone decides to take shortcuts, weekend projects can lead to Internet and power outages, injuries and sometimes worse. That's why it's so important (actually, it's the law) to have buried utilities in your yard located and marked before you dig.

Thankfully, it's easy!

STEP 1

Simply dial 811 two weekdays before you plan to dig to provide your address and contact information.

Sunshine 811 2 Full Business Days						
Sun	Mon	Tue	Wed	Thur	Fri	Sat
			Get ticket	Day 1	Day 2	OK to dig
				Get ticket	Day 1	Weekend*
Weekend*	Holiday*	Day 2	OK to dig			

* Weekends and holidays do not count as day 1 or 2

STEP 2

Within the two days, utility companies – like Beaches Energy – will visit your yard and your phone and Internet provider – will visit your yard to approximately mark buried lines with flags and paint.

STEP 3

After the two days and all utilities have been marked, you are clear to dig! Be sure not to dig within 24 inches of the marked flags and paint.



LEARN MORE AT
www.sunshine811.com

Have a question? Visit BeachesEnergy.com/Trees for more information on vegetation management!

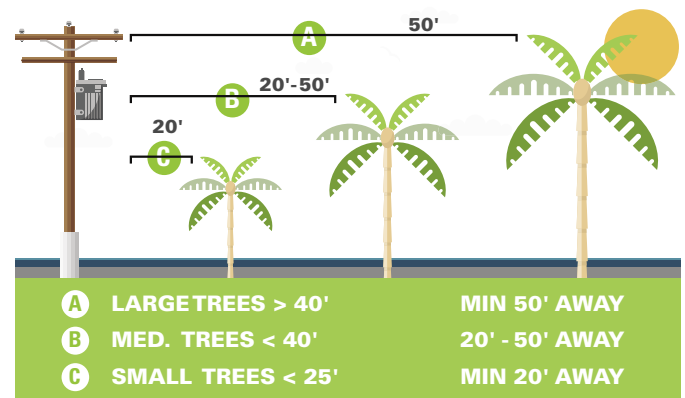
PLAN BEFORE YOU PLANT

Trees are a beautiful way to enhance your home's landscape. Just remember to consider a tree's height and width before planting in your yard. Think about how large a tree will grow in 10 or 25 years and consider power lines, sidewalks, driveways and fences that might be affected by growing limbs.



TIP: Plant your tree at least half the length of its estimated mature crown width from any nearby structures or power lines. Here are some examples!

Tree Type	Planting Distance
Live Oak	~50 ft
Magnolia	~25 ft
Crape Myrtle	~20 ft min
Sabal Palm	~20 ft min



ELECTRIC PRICE FOR 1,000 KILOWATT-HOURS

Rate Component	February	March
Residential Base Charge	\$4.50	\$4.50
KWH base charge	\$83.57	\$83.57
Bulk Power Cost Adjustment	\$21.84	\$21.84
Total Rate Billed per 1,000 kwh	\$109.91	\$109.91