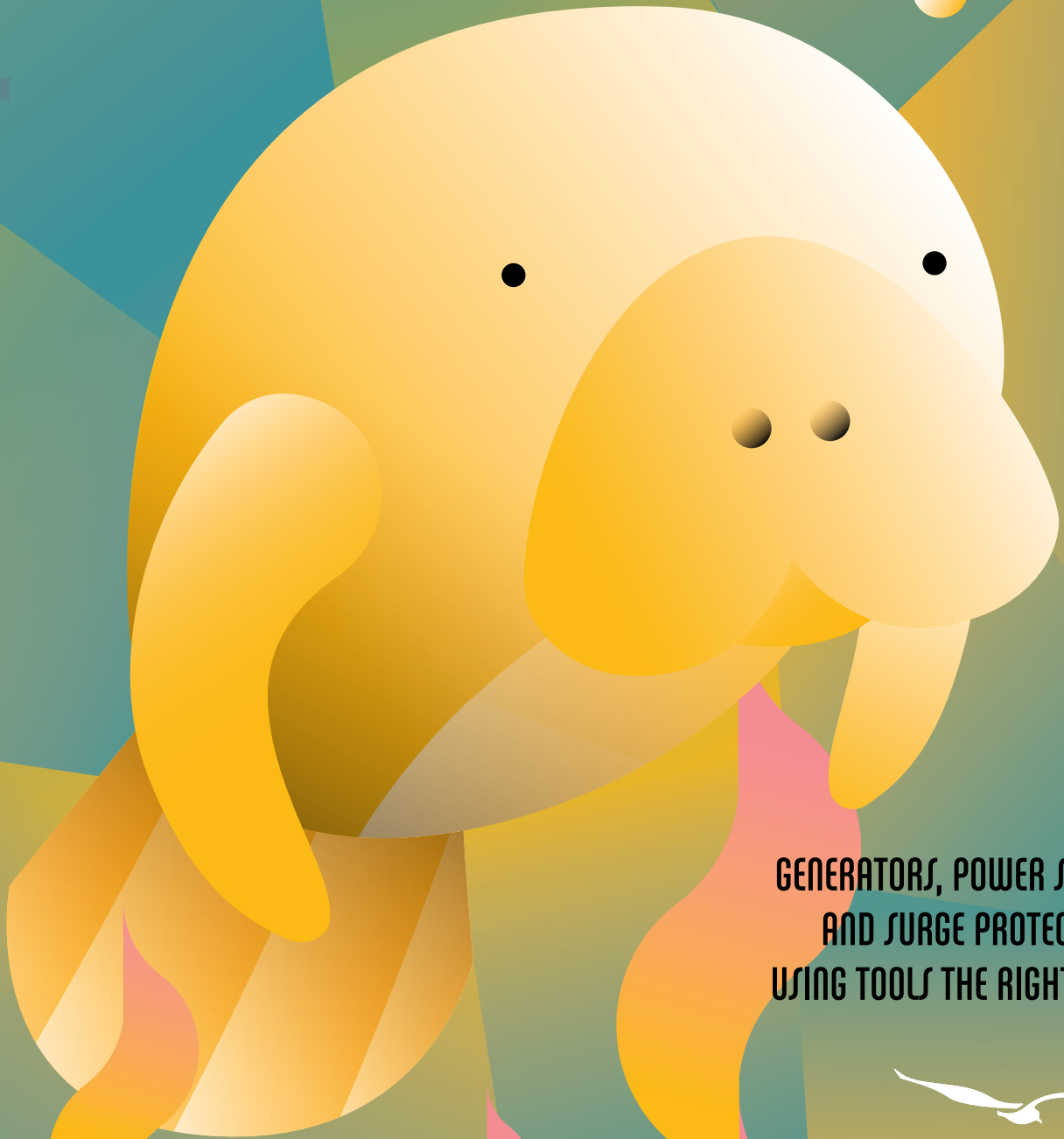


the
TIDINGS

SEPTEMBER, TWO THOUSAND AND TWENTY FOUR



**GENERATORS, POWER STRIPS,
AND SURGE PROTECTORS:
USING TOOLS THE RIGHT WAY**



**BEACHES | ENERGY
S E R V I C E S**

TIPS FOR USING PORTABLE GENERATORS THIS STORM SEASON

As helpful as they are, generators can be dangerous if they're not used properly. Be sure you take all the proper precautions when operating portable generators—it's better to be safe than sorry.

Check out some of the "DOs" and "DON'Ts" for generator usage:

DO:

- Keep kids and pets away from the portable generator.
- Have three-pronged extension cords on hand—anything less may not be able to handle the load of the generator.
- Inspect extension cords for damage before plugging in.
- Place the generator at least 25 feet away from your home and garage.
- Install backup carbon monoxide alarms.
- Keep a fire extinguisher nearby.

DON'T:

- Don't connect your generator directly to your home's wiring or plug a generator into household outlets — this can be deadly.
- Don't use a portable generator in a flooded area.
- Don't run everything at the same time—be sure to rotate larger items.
- Don't store fuel indoors or refuel a generator while it's running.

Find more generator tips by visiting [BeachesEnergy.com/Generators](https://www.beachesenergy.com/generators)

SURGE PROTECTOR OR POWER STRIP: WHICH ONE SHOULD YOU USE?

Let's face it: surge protectors and power strips look similar—and many of us have even wondered, "what's the difference?"

The short answer? Power strips have electrical sockets that power multiple devices from a single outlet. Surge protectors do too, but they also protect against power surges and prevent electronics from getting fried during storms.

Want the easy, fool-proof way to protect your sensitive electronics like computers and other appliances? You might want to try a power strip that also contains a surge protector. You can find them at most stores like Target, Walmart, and Amazon, and they offer valuable protection against dangerous power surges.

SIGN UP FOR CODE RED

Sign up for CodeRED hurricane alerts today. Get storm updates, evacuation notices and more, all sent straight to your phone or email.

Two easy ways to enroll:

1. Register online at [BeachesEnergy.com/CodeRed](https://www.beachesenergy.com/CodeRed)

OR

2. Text "Beaches" to 99411

ELECTRIC PRICE FOR 1,000 KILOWATT-HOURS

Rate Component	August	September
Residential Base Charge	\$4.50	\$4.50
kWh Base Charge	\$91.24	\$91.24
Bulk Power Cost Adjustment	\$31.64	\$31.64
Total Rate Billed per 1,000 kWh	\$127.38	\$127.38