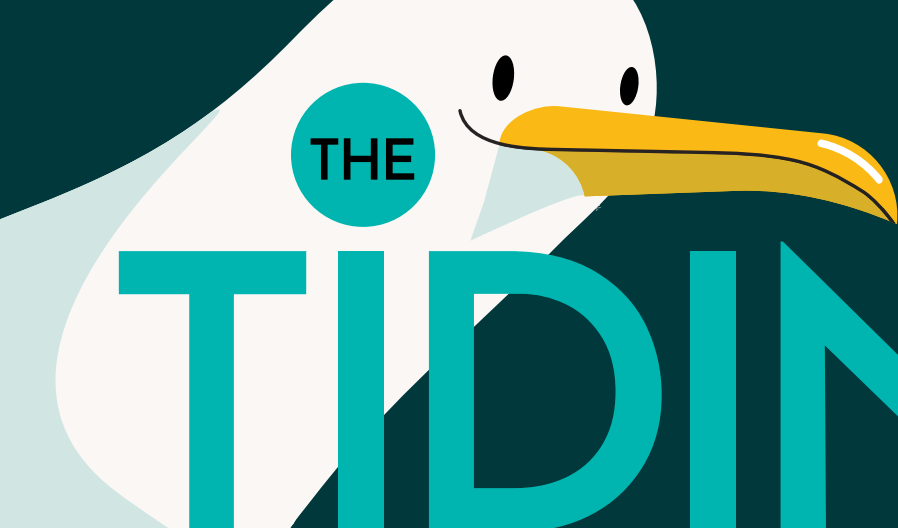


THE

MAY 2026

TIDINGS



CLEAN

DARK

FLAT



BEACHES | ENERGY
SERVICES

SHINING A LIGHT ON SEA TURTLE SAFETY

Over the last few years, Beaches Energy has been replacing lights across the community with a new take on existing technology that balances the need for safe, comfortable beach access without distractions that can harm sea turtles.

These true amber LEDs can stay up year-round and allow us to create beach access points that are:



Well-lit for human safety



Sea turtle-friendly to protect hatchlings



Durable and easy to maintain

See what else we're doing to protect local sea turtles at [BeachesEnergy.com/Turtles](https://www.beachesenergy.com/Turtles)

HOW YOU CAN HELP

The easiest way to help protect sea turtles in our community is to keep the beach CLEAN DARK FLAT:

<p>Cleaning up after yourself</p>	<p>Turn off beachfront lights at night</p>	<p>Flatten sandcastles and fill in holes before you head home</p>
--	---	--

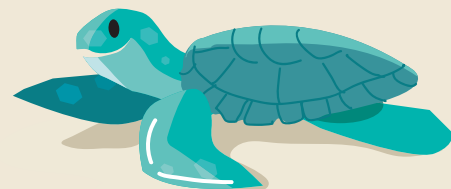
You can also support the work of the Beaches Sea Turtle Patrol (BSTP)—an all-volunteer effort to help protect sea turtle nests and hatchlings on our shores. Beaches Energy is proud to work closely with the BSTP and support their work.

THE MAN ON A MISSION



"At Beaches Energy, part of our commitment to the community is the obligation to protect our local wildlife. This is the unique application of existing technology, explicitly designed for this specific purpose. We can't wait to see it in action."

Matt Seeley



ELECTRIC PRICE FOR 1,000 KILOWATT-HOURS

Rate Component	May	June
Residential Base Charge	\$4.50	\$4.50
kWh Base Charge	\$91.24	\$91.24
Bulk Power Cost Adjustment	\$27.84	\$30.62
Total Rate Billed per 1,000 kWh	\$123.58	\$126.36